



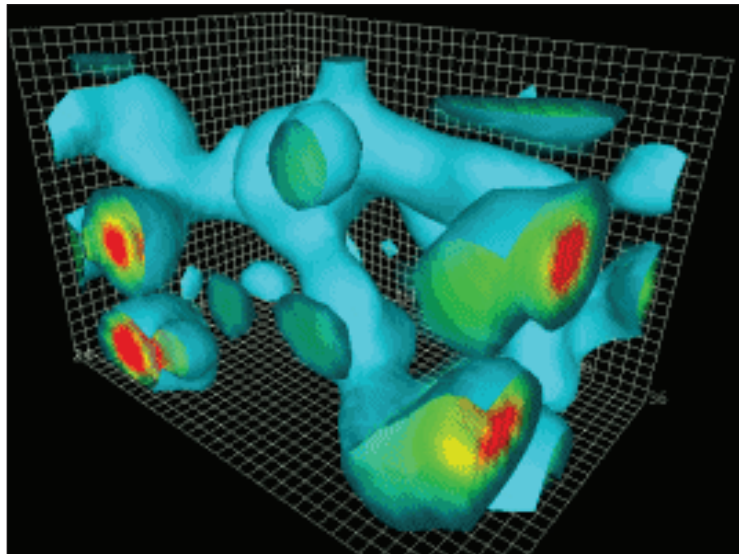
Wright
Laboratory



Kimmy Cushman
Yale University

February 5, 2019 at 3:00 p.m. in WLC-245

Extracting Excited States from Lattice Correlation Functions



I will discuss the development of our new approach to analyze lattice gauge theory data. We hope to improve excited state extraction for our research in beyond the standard model composite Higgs dynamics. However, this method of extracting excited states from lattice correlation functions would be useful to lattice gauge theorists in general, as well as data analysts investigating exponentially decaying signals. I will describe the challenges faced in this approach and demonstrate our attempts to overcome them.

Sponsored by the Flint Fund, Yale Wright Laboratory, Yale University, and the Yale Physics Department.

WIDG